

# Proposal for DCC Supporting People and Clwyd Alyn Collaborative Agreement

## Wellbeing Impact Assessment Report

This report summarises the likely impact of a proposal on the social, economic, environmental and cultural well-being of Denbighshire, Wales and the world.

Assessment Number:	180
Brief description:	Denbighshire Supporting People (SP) propose that from October 2018, the remodelled Y Dyfodol project is delivered under the terms of a partnership agreement between SP and Clwyd Alyn Housing Association. SP currently contract Clwyd Alyn to deliver this service.
Date Completed:	Version: 0
Completed By:	
Responsible Service:	
Localities affected by the proposal:	Whole County,

# IMPACT ASSESSMENT SUMMARY AND CONCLUSION

Before we look in detail at the contribution and impact of the proposal, it is important to consider how the proposal is applying the sustainable development principle. This means that we must act "in a manner which seeks to ensure that the needs of the present are met without compromising the ability of future generations to meet their own needs."

## Score for the sustainability of the approach

Your Approach Is Excellent

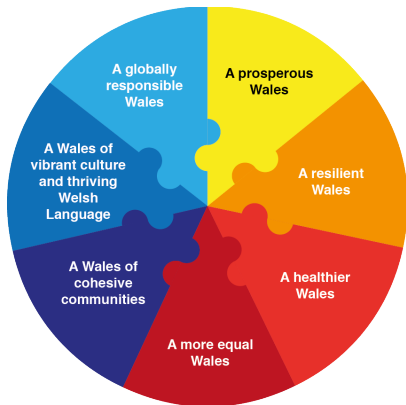
(4 out of 4 stars)



Actual score: 24/ 24.

## Summary of impact

Wellbeing Goals



A prosperous Denbighshire	Positive
A resilient Denbighshire	Positive
A healthier Denbighshire	Positive
A more equal Denbighshire	Positive
A Denbighshire of cohesive communities	Positive
A Denbighshire of vibrant culture and thriving Welsh language	Neutral
A globally responsible Denbighshire	Positive

## Main conclusions

# THE LIKELY IMPACT ON DENBIGHSHIRE, WALES AND THE WORLD

## A prosperous Denbighshire

Overall Impact:	Positive
Justification for Impact:	This will ultimately involve a more creative and collaborative way of delivering a project with numerous clear benefits in terms of Denbighshire's prosperity - including that the project will support statutory services in meeting several duties, including under the Housing Act 2014, Social Services and Wellbeing Act 2015, and Offender Rehabilitation Act 2014; additionally tender could result in the loss of accommodation, which could also result in a large unused building situated within the West Rhyl regeneration area.

### **Positive consequences identified:**

All SP projects support economic development, by supporting independence, and alleviating the pressure on statutory services.

SP are looking to enter into a partnership agreement with Clwyd Alyn to deliver the remodelled Y Dyfodol project for several reasons, including:

The project will support statutory services in meeting several duties, including under the Housing Act 2014, Social Services and Wellbeing Act 2015, and Offender Rehabilitation Act 2014; additionally tender could result in the loss of accommodation, which could also result in a large unused building situated within the West Rhyl regeneration area.

CAHA will also be offering several community benefits relating to employment skills.

This proposed collaborative approach, and the wider YP pathway, seeks to establish a sustainable project moving forwards.

This proposed collaborative approach, and the wider YP pathway, seeks to establish a sustainable project, and one where staff are aware and trained in the principles of the YP pathway. CAHA will also be offering several community benefits relating to employment skills.

### **Unintended negative consequences identified:**

### **Mitigating actions:**

## A resilient Denbighshire

Overall Impact:	Positive
Justification for Impact:	This will ensure that a large building in West Rhyl is not left unoccupied, and will negate the need for further development.

### **Positive consequences identified:**

This will ensure that a large building in West Rhyl is not left unoccupied, and will negate the need for further development.

This will ensure that a large building in West Rhyl is not left unoccupied, and will negate the need for further development.

### **Unintended negative consequences identified:**

### **Mitigating actions:**

## A healthier Denbighshire

Overall Impact:	Positive
Justification for Impact:	All SP projects support individuals in several respects around their health and wellbeing, which they are required to report on as part of the SP outcomes framework. The YP pathway specifically will also involve close joint working with health agencies, including CAMHS.

### **Positive consequences identified:**

All SP projects, by supporting individuals and communities, support a social and physical environment that encourages and support health and well-being. These are areas specifically captured within the SP outcomes framework, which all projects are required to report on.

All SP projects support individuals to access good quality, healthy food (e.g. by supporting with budgeting, drawing up healthy meal plans etc.). These are areas specifically captured within the SP outcomes framework, which all projects are required to report on.

All SP projects support individuals to participate in leisure activities, both from the point of view of physical health, and community involvement. These are areas specifically captured within the SP outcomes framework, which all projects are required to report on.

All SP projects individuals around their emotional and mental wellbeing. The YP Pathway specifically with involve close joint working with CAMHS.

All SP projects support individuals to access healthcare, including things like registering with a dentist and GP. This area is specifically captured within the SP outcomes framework, which all projects are required to report on.

### **Unintended negative consequences identified:**

### **Mitigating actions:**

## A more equal Denbighshire

Overall Impact:	Positive
Justification for Impact:	Reducing inequalities, particularly in relation to poverty (in the context that SP projects support a diverse and sometimes complex client group) is a fundamental tenet of SP support.

### **Positive consequences identified:**

All SP projects have clear policies around equality and diversity. The YP Pathway will also specifically seek to mitigate certain issues relating to age, e.g. working around affordable accommodation options for young people. As previous, all SP projects support around health - doing so in the context of a diverse and sometimes complex client group, where health inequalities may be common.

This is a fundamental aim of all SP projects (SP being one of the 4 Tackling Poverty Streams), as it is for the YP Pathway, which seeks to support better and more sustainable outcomes for young people with support needs, many of whom experience or are at risk of poverty.

### **Unintended negative consequences identified:**

### **Mitigating actions:**

## A Denbighshire of cohesive communities

Overall Impact:	Positive
Justification for Impact:	This project will have positive impacts in this area due both to the nature of the support to be delivered (around community participation, safety etc.), and the fact that it will contribute to the West Rhyl Regeneration agenda.

### Positive consequences identified:

All SP projects support the safety of individuals and others (this is a specific area captured in the SP outcomes framework). The YP Pathway, with remodelled Y Dyfodol, will support the safety of communities and individuals by close joint working with YJS, Police, and other community safety bodies.

All SP projects support around community participation (this is a specific area captured in the SP outcomes framework). The YP Pathway additionally is taking a longer term and sustainable approach to supporting the young people of Denbighshire, with a keen focus on prevention. Y Dyfodol will additionally be offering several community benefits which will support young people to participate (in the context of employment, volunteering etc.)

This proposal would ensure that a large building in West Rhyl will not be left empty - contributing to the West Rhyl Regeneration agenda.

### Unintended negative consequences identified:

### Mitigating actions:

## A Denbighshire of vibrant culture and thriving Welsh language

Overall Impact:	Neutral
Justification for Impact:	All SP projects are required to have a Welsh Language policy; however, as this is an existing provider, it is not anticipated that this proposal would bring about any change in this regard.

### **Positive consequences identified:**

All SP projects are required to have a Welsh language policy.

### **Unintended negative consequences identified:**

### **Mitigating actions:**



## A globally responsible Denbighshire

Overall Impact:	Positive
Justification for Impact:	CAHA as an organisation can bring several community benefits to this arrangement, including utilization of an existing social enterprise. More broadly speaking, all SP projects serve to take the pressure of statutory (and other) services.

### **Positive consequences identified:**

The project will provide local community benefits, mostly around employment. CAHA additionally have a social enterprise cafe in a neighbouring local authority, which links would be made with in this context. This project will be funded in line with SP's benchmark, which has been calculated to align with the 'living wage'. All SP projects in particular serve to take the pressure of statutory (and other) services. The YP Pathway in particular will involve close joint working, to overall achieve better outcomes, with several statutory services (e.g. Children's Services, YJS).

### **Unintended negative consequences identified:**

### **Mitigating actions:**